



Spring 2018

# Palomar Park Perspectives

QUARTERLY PUBLICATION OF THE PALOMAR PROPERTY OWNERS

## ENJOY WHAT OUR AREA HAS TO OFFER

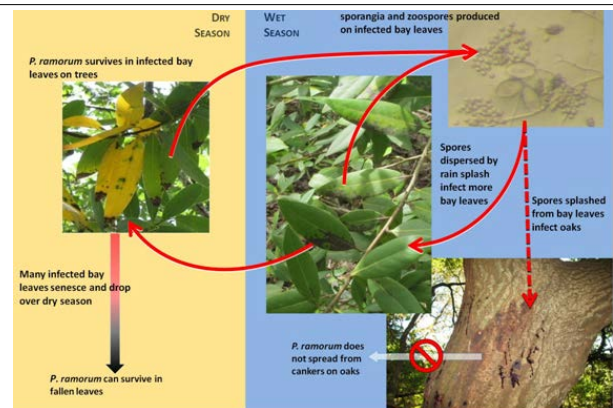
### *New Mid-Peninsula Open Space Trail*

Offering magnificent views of the coast, colorful wildflower displays in the spring, and immersion into a historic ranchland, La Honda Creek Open Space Preserve is an ideal spot to escape the pressures of everyday life. The more than 6,100-acre Preserve, considered by many as the gateway to the San Mateo Coast, features forests and redwood to the north, open rolling grasslands to the south, and spectacular panoramic views of the coast and ridgelines throughout. Get out and do it! [www.openspace.org/preserves](http://www.openspace.org/preserves)



## SUDDEN OAK DEATH or SOD

The beautiful oak trees in Palomar Park are partly what make this such a special place. These majestic trees, some of which have been around for 200 years, provide a bounty of acorns for wildlife. Their pollen a favorite for honey bees and the large cavities in their branches provide wonderful high and protected nest sites for owls and squirrels. These trees are fire resistant and provide wonderful erosion control for our hillsides. What kid doesn't dream of having a rope swing off a high sturdy branch of a mighty oak. However, over the last 15 years our beloved oaks have been under attack from Sudden Oak Death "SOD". *P. ramorum* is the pathogen that attacks the oak from the inside and cuts off its ability to absorb water to its upper limbs. The pathogen lives in the bay laurel trees which are often found near oaks. The bays are considered a host and can contaminate nearby oaks (just like spreading the flu). A visual sign that a bay is infected can be identified by a partial brown spot near the point of the bay leaf.



**Annual spraying with Agri-fos helps immunize oaks from SOD. Contract a tree spraying company to spray your most beloved oak trees during the cold winter months. Removing bay laurels that are touching or under your oaks is also a defense.**



***Phytophthora ramorum canker at the base of a coast live oak.***

Have a story for the newsletter? You are encouraged to submit your articles and photos to [PalomarNews@Gmail.com](mailto:PalomarNews@Gmail.com) or put them in the 419 Palomar Drive mailbox.

## THE BENEFITS OF RECYCLING CAN ADD UP!



Educators have created interesting and innovative curriculum to teach today's school-aged children about the importance of waste prevention and recycling. If you don't have a kid handy to remind you about how important it is to conserve natural resources and extend the life of our existing landfills by participating in community recycling programs, then consider the following:

- Using one ton of post-consumer paper to make new paper products saves approximately 7,000 gallons of water and conserves 3.3 cubic yards of landfill space.
- Recycling 300 lbs. of paper saves roughly one tree.
- For every ton of glass that is recycled we eliminate 384 lbs. of mining waste.
- Using post-consumer aluminum cans to make new cans produces about 95% less air pollution as compared to the process of manufacturing aluminum cans from virgin materials.
- Paper recycling reduces pollution by about 50%.
- Recycling a 36-in stack of newspaper saves about 73 kilowatt hours of electricity and about 14% of a typical residential electric utility bill.
- Recycling one pound of aluminum saves enough energy to light a 100-watt bulb for 290 hours.
- It takes 64% less energy to make paper products from post-consumer paper, saving an equivalent of three barrels of oil for each ton of paper that is recycled.

Here in Palomar Park please do not put the following in your recycle bin: ***Plastic bags, styrofoam, garden hoses, PVC or other piping, coat hangers, scrap metal, fuel tanks, propane tanks, mirrors, light bulbs, vases, window panes, dishware, drinking glasses or mugs, hardback books, photographs, carbon paper, facial or toilet tissues, plastic or foil lining from cereal boxes, thermal fax paper or paper and cardboard contaminated by food.***

[www.recology.com](http://www.recology.com)

## SPRING IS IN THE AIR

It's that time of year when all the plants in your yard are ready to start their magnificent budding, blooming and leafing out season.

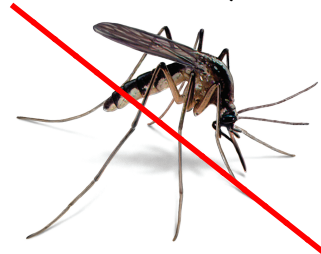
- \* **Prune away dead and damaged branches.**
- \* **Clean up leaves and debris around plants.**
- \* **Prep damaged lawn areas for Spring seeding.**
- \* **Rake escaped gravel back into walkways and patios.**
- \* **Start to check drip irrigation lines that may have been damaged during the winter.**
- \* **Think about obtaining a load of organic mulch for ornamental trees, perennials and bushes to feed and maintain root moisture.**



Standing water is the number one breeding spot for mosquitoes. Sometimes, it is nearly impossible to find all the bodies of standing water and drain them. However, there are a few precautions you can take to prevent water from building up.

**Here are some tips to get you started:**

- \* Get rid of unused pots or bins or turn them upside down, so they don't collect water.
- \* Keep trash and recycling bins covered.
- \* Keep a fine-mesh screen over rain barrels/water tanks.
- \* Take a look at your plants. Are any of them collecting water in between the leaves and the stems? If so, consider poking a tiny hole with a pin into those areas to allow for proper drainage.
- \* Clear rain gutters of debris that may be trapping water.



## TIPS FOR A MORE SECURE HOME



Your home is your castle. Most modern homes are sadly absent a moat and drawbridge to keep that castle safe and secure. It's important to think of home security as an onion of many different security measures acting together to prevent an unauthorized individual from entering your home.

**Here are 5 simple tips to keep your home, your property, and your peace of mind secure:**

### TIP 1

The easiest step is to use any security measures you may already have installed. Check that all doors and windows are locked, security systems are armed, and your garage door is secured when not in use.

### TIP 2

Trim trees and shrubs so that they cannot be used as a hiding place or as concealment for an intruder. It also makes your home look occupied and well-maintained showing any potential intruder that someone is responsible for the property and cares about it.

### TIP 3

Secure any sliding doors or windows with a bar or fixture to supplement the lock installed on the opening itself. A simple aluminum rod dropped in the track will prevent someone from overcoming the lock and gaining entry to the opening.

### TIP 4

Add some visible deterrents, such as signs advertising that a security system protects your home, even if you do not have one. While installing a high-quality camera or alarm system is always recommended, adding signs creates a greater deterrent against crime.

### TIP 5

Avoid leaving keys in 'secret' hiding spots. If absolutely necessary, leave it with a close relative or other trusted person - intruders know to search for hidden access keys. If you use an auxiliary key regularly, consider a smart lock controlled by a cell phone with RFID "digital" keys.

## NEW NEIGHBORS



We have new neighbors in Palomar Park. We would like to officially welcome the following families to the hill:

1001 Palomar: Michael Kiedel and Kathleen Surman

18 Los Cerros: Victor Lee

563 Palomar: Moghadam Saeid & Forozandeh Trust

75 El Vanada: Shelby Windler and Mary Schmidt



Hi Palomar Park Neighbors,

As you've hopefully seen and heard, the PPO board has made an effort to repair the mailbox houses in our neighborhood. The reality is that most of them need some sort of attention, but we will be prioritizing the ones in the worst shape first and over the next few years we hope to upgrade all of them. The board has set aside 1/3 of our annual dues towards these repairs, which doesn't get us very far.

If you would like to help us get more bang for our buck and repair more mailboxes, or if you have an interest in carpentry and giving back to your neighborhood, please contact Adam Mittleman ([adam.mittleman@gmail.com](mailto:adam.mittleman@gmail.com)) or Jeff Garratt ([jgarratt@g-c.com](mailto:jgarratt@g-c.com)) to join our mailbox repair team!

## CONSTRUCTION REGS

Just a friendly reminder that the hours of construction in Unincorporated San Mateo County are mon - fri 7:00am - 6:00pm and Sat 9:00am - 5:00pm. No contractor construction is allowed on Sundays.

If you have a question for the Planning or Building department, you can call 650-599-7311.





## UNWANTED GUESTS

### Ticks.... why we need to protect ourselves

Deer Tick



If you spend time outdoors or have pets that go outdoors, you need to beware of ticks. Ticks are small bloodsucking parasites. Many species transmit disease to people and pets.

#### Common tick-borne diseases include:

- Lyme disease
- Rocky Mountain spotted fever
- Tularemia
- Ehrlichiosis
- Relapsing fever
- Colorado tick fever
- Babesiosis

Some ticks are so small that they can be difficult to see. Ticks may get on you if you walk through areas where they live, such as tall grass, leaf litter or shrubs.

#### Here are some simple landscaping techniques that can help reduce tick populations:

- Remove leaf litter.
- Clear tall grasses and brush around homes and at the edge of lawns.
- Place a 3-ft wide barrier of wood chips or gravel between lawns and wooded areas to restrict tick migration into recreational areas.

#### If you walk on trails or are outside gardening try the following to keep you, your family and pets safe:

- Use a repellent with DEET, permethrin or picaridin.
- Wear light-colored protective clothing.
- Tuck pant legs into socks.
- Avoid tick-infested areas.
- Check yourself, your children and your pets daily for ticks and carefully remove any ticks you find.



Bay Area Lyme Foundation [www.bayarealyme.org](http://www.bayarealyme.org)

## PPO ANNUAL MEMBER DUES

Now is the time to renew your annual membership with the Palomar Park Property Owners. We depend on member dues to repair our community mailboxes, host the picnic, fund the annual chipper program and other beneficial projects and functions for Palomar Park residents.

Your \$50 donation goes a long way. You can pay online at [www.palomarpark.org](http://www.palomarpark.org) or mail a check to:

**PPO**  
**419 Palomar Dr.**  
**Palomar Dr. Palomar Park, CA 94062**

## GENERAL MEETING

*Date: April 24th*

*Time: 7:00 pm*

*Place: Canyon Inn*  
*587 Canyon Rd*



## WE NEED YOUR EMAIL ADDRESS

PPO would like to have all of our resident's email addresses so that we may deliver important emergency notifications, meeting dates and agendas as well as a digital copy of our newsletter.

Please send us a note at: [PalomarNews@gmail.com](mailto:PalomarNews@gmail.com)

### PPO BOARD OF DIRECTORS

**PRESIDENT** - MIKE KUBIAK  
**CO-VICE PRESIDENT** - JEFF GARRATT  
**CO-VICE PRESIDENT** - DENISE ENEA-CHARLEBOIS  
**SECRETARY**- ADAM MITTLEMAN  
**TREASURER** - NIKKI DEPOLD  
**ASSOCIATE MEMBER** - INDY Di BONA  
**BOARD MEMBER** - KIM ESSEN  
**BOARD MEMBER** - LEXI BAILEY  
**BOARD MEMBER** - Vacant  
**BOARD MEMBER** - Vacant

**Are you interested in being a PPO Board member?**  
**We are looking for two new Board members.**

CONTACT US AT [PalomarNews@gmail.com](mailto:PalomarNews@gmail.com)